

ORIGINS

WC400 • WATER CONDITIONER

Treat Your Water – Take Care of Your Health

When your home uses hard water, undesirable elements, like calcium, magnesium, chlorine, iron and sediment enter from wells or municipal water supplies. They take a toll on your plumbing, appliances, linens, glassware and more. And that takes a toll on your wallet. The solution is an Aerus Origins WC400 Water Conditioner. By supplying conditioned water throughout your home, you can enjoy the benefits of quality water. You can taste, see and feel the evidence of soft, conditioned water in your home.



A water conditioner is the best option for eliminating hard water. Soft water allows showerheads to maintain luster and full flow, leaving you feeling cleaner. Clothes will rinse cleaner, feel softer and retain color longer. Soft water also reduces detergent and soap use, making sinks, tubs, tile and fixtures easier to clean without the added residue or lime scum. These benefits help to reduce energy costs and extend the life of your water heater and appliances.

Benefits:

24/7 Monitoring – Full digital controller adjusts according to usage

Expert Efficiency – Only regenerates when needed

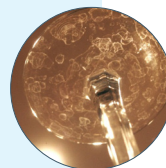
First Alert – Conductivity cells instantly alert the system controller to any change in water quality

Memory Back-up – Origins retains settings during power outages

Top Notch Quality – Components constructed of the best materials to withstand corrosion and wear

One of a Kind – Dual-Sensor Regen System measures water hardness second by second allowing the unit to always properly adjust

Easy on the Environment – Fewer regeneration and rinse cycles conserve water and energy

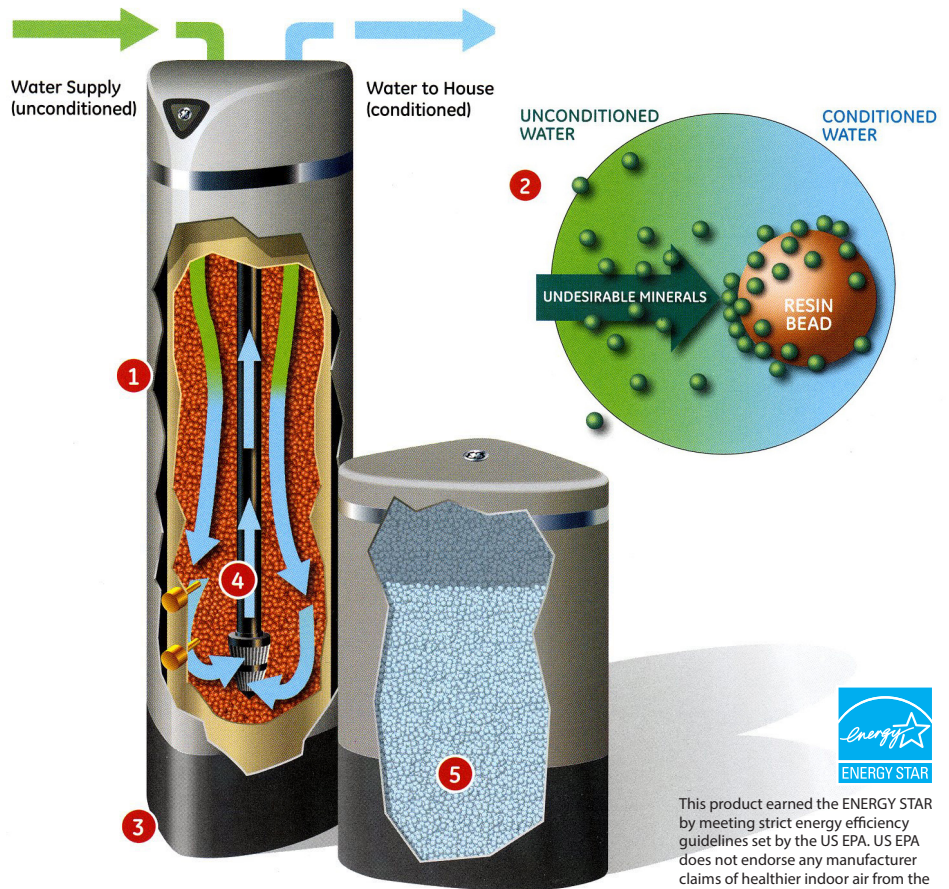


Facts About Hard Water

- Hard water is water that contains a high concentration of minerals, such as magnesium and calcium
- Unconditioned water leaves unsightly stains and residue on sinks, tubs, tile and fixtures
- Undesirable mineral build-up can etch and stain kitchen sinks and granite countertops
- Magnesium consumes soap which can leave spots and residue on washed dishes and make freshly washed clothes look dingy
- Makes household chores more difficult and can even leave hair sticky and dull
- Can leave your towels scratchy and nonabsorbent and cause premature fabric failure
- Prevents soaps from lathering or rinsing well which leaves a residue on everything including skin and hair

The Origins Water Conditioning Process

1. Unconditioned water passes through a bed of extremely small resin beads.
2. Undesirable minerals are drawn to the resin beads and attach to the surface.
3. Virtually all undesirable minerals are removed when the water reaches the bottom of the tank.
4. The conditioned water passes up through the riser tube and is distributed throughout the house.
5. Regenerant solution from the brine tank is used to recharge the resin beads.



This product earned the ENERGY STAR by meeting strict energy efficiency guidelines set by the US EPA. US EPA does not endorse any manufacturer claims of healthier indoor air from the use of this product.

Specifications and Features:

- 268 High Flow Autotrol Valve for long life
- 12" x 48" tank – 1.5 ft³ 10% CL Resin
- Unique Torbalone Brine tank for maximum salt efficiency
- High-efficiency 7 cycle regeneration
- World's highest efficiency 1-tank conditioner
- Energy Star Certified



The First Name in Healthy Homes[®]

From 1924 through the turn of the century, we were

Electrolux, the clear leader in home cleaning throughout North

America. Now, we're Aerus, a new name for a new generation of products and

services designed to help make your home a Healthy Home. All backed by

performance so legendary, over 99.8% of our customers

recommend Aerus to their friends and family.



Honored by the Smithsonian
Trusted by Millions of Homes

We Offer Lifetime In-Home Service

ELECTROLUX[®]

Aerus. Your Original Manufacturer & Authorized Provider of Parts & Services for all 1924-2003 Electrolux Vacuums.

Name _____

Phone Number _____

800.243.9078 (US) | 800.668.0763 (CANADA)

www.aerushome.com